

## RASPBERRY BERET

Terpenes Analysis Report

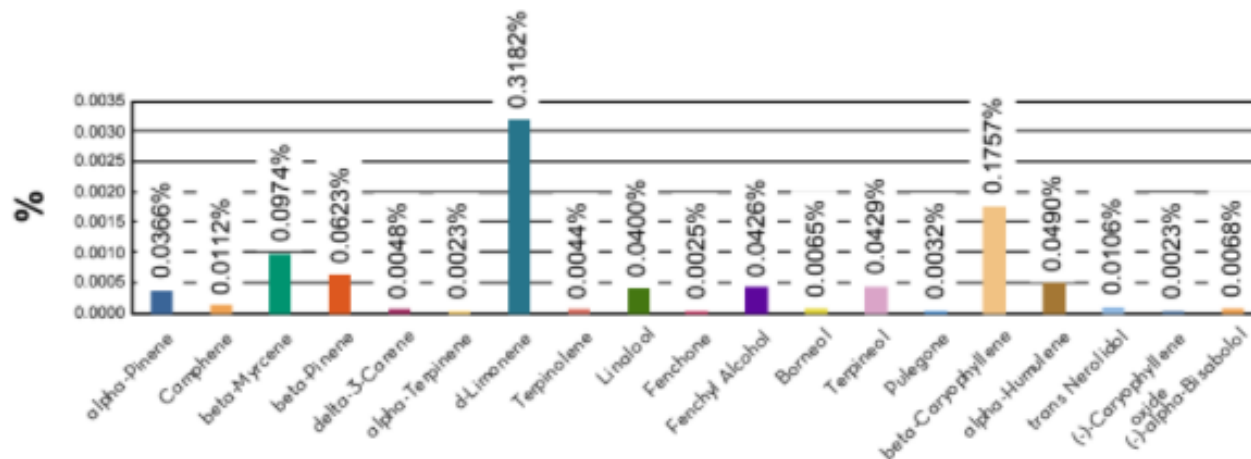
Sample: **96738-P** PLANTS

Item Notes:

METRC No. **1A4000B0000B290000001067**

Batch: 9R56-O210-RAS

### TOTAL TERPENES:\*\* 0.92221%



Measured Concentration in Weight Percent by GC Analysis

N/D = Not Detected. The level of analyte was below the detection threshold for this test.

LLOQ = Lower Limit of Quantitation. <LLOQ signifies that the analyte was detected at a concentration below the calibrated range of the method and could not be accurately measured.

ULOQ = Upper Limit of Quantitation. >ULOQ signifies that the analyte was detected at a concentration above the calibrated range of the method and could not be accurately measured.

\* This value is above the ULOQ. This value is an approximation of the true concentration and should only be used as an estimate.

\*\*Total Terpenes = The sum of the individual terpene concentrations present in the sample, including the terpenes with estimated concentrations (>ULOQ and <LLOQ).

### RESULTS

Alpha-Pinene 0.0366	Camphene 0.0112
Sabinene N/D	Beta-Myrcene 0.0974
Beta-Pinene 0.0623	Alpha-Phellandrene N/D
Delta-3-Carene 0.0048	Alpha-Terpinene 0.0023
Ocimene N/D	D-Limonene 0.3182
P-Cymene N/D	Beta-Ocimene < LLOQ
Eucalyptol N/D	Gamma-Terpinene N/D
Terpinolene 0.0044	Linalol 0.0400
Fenchone 0.0025	Fenchyl Alcohol 0.0426
neg_Isopulegol N/D	Camphor N/D
iso-Borneol N/D	Hexahydrothymol < LLOQ
Borneol 0.0065	Terpineol 0.0429
Gamma-Terpineol N/D	Geraniol N/D
Pulegone 0.0032	Geranyl Acetate N/D
alpha-Cedrene N/D	Beta-Caryophyllene 0.1757
Alpha-Humulene 0.0490	Valencene N/D
cis-Nerolidol N/D	trans-Nerolidol 0.0106
neg_Guaiol N/D	neg_Caryophyllene oxide 0.0023
Cedrol N/D	neg_alpha-Bisabolol 0.0068